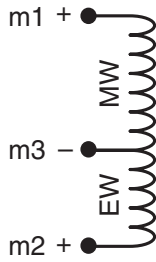
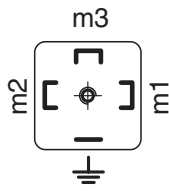
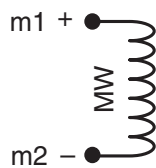
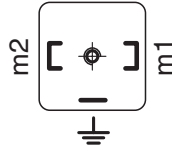


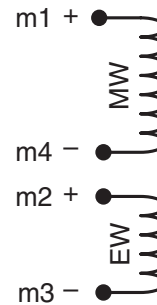
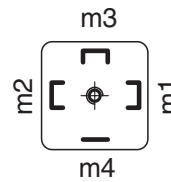
doppio avvolgimento
double winding



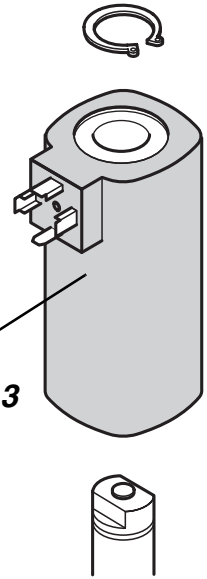
singolo avvolgimento
single winding



avvolgimenti separati
separate windings



**PEZZI 3
PIECES 3**



Legenda

MW = avvolgimento principale	MW = main winding
EW = avvolgimento di emergenza	EW = emergency winding

Solenoidi avvolgimento singolo - *single winding solenoid*

descrizione		<i>description</i>		codice / <i>code</i>
bobina 24 Vcc	PZ.3	<i>coil 24 Vdc</i>	<i>PCS.3</i>	R8 0200 002
bobina 48 Vcc	PZ.3	<i>coil 48 Vdc</i>	<i>PCS.3</i>	R8 0200 006
bobina 80 Vcc	PZ.3	<i>coil 80 Vdc</i>	<i>PCS.3</i>	R8 0200 010
bobina 90 Vcc	PZ.3	<i>coil 90 Vdc</i>	<i>PCS.3</i>	R8 0200 013
bobina 110 Vcc	PZ.3	<i>coil 110 Vdc</i>	<i>PCS.3</i>	R8 0200 017
bobina 180 Vcc	PZ.3	<i>coil 180 Vdc</i>	<i>PCS.3</i>	R8 0200 022
bobina 110 Vca	PZ.3	<i>coil 110 Vac</i>	<i>PCS.3</i>	R8 0200 018
bobina 208 Vca	PZ.3	<i>coil 208 Vac</i>	<i>PCS.3</i>	R8 0200 024
bobina 220 Vca	PZ.3	<i>coil 220 Vac</i>	<i>PCS.3</i>	R8 0200 026
bobina 110 Vca (1)	PZ.1	<i>coil 110 Vac (1)</i>	<i>PCS.1</i>	R6 0200 272
bobina 220 Vca (1)	PZ.1	<i>coil 220 Vac (1)</i>	<i>PCS.1</i>	R6 0200 274

(1) con condensatore (conforme EN 55022) / *with capacitor (according to EN 55022)*

Bobine doppio avvolgimento - *double winding solenoid coils*

descrizione		description		codice / code
bobina 24 Vcc / 12 Vcc	PZ.3	coil 24 Vdc / 12 Vdc	PCS.3	R8 0200 001
bobina 48 Vcc / 12 Vcc	PZ.3	coil 48 Vdc / 12 Vdc	PCS.3	R8 0200 003
bobina 48 Vcc / 24 Vcc	PZ.3	coil 48 Vdc / 24 Vdc	PCS.3	R8 0200 005
bobina 80 Vcc / 12 Vcc	PZ.3	coil 80 Vdc / 12 Vdc	PCS.3	R8 0200 007
bobina 80 Vcc / 24 Vcc	PZ.3	coil 80 Vdc / 24 Vdc	PCS.3	R8 0200 009
bobina 90 Vcc / 12 Vcc	PZ.3	coil 90 Vdc / 12 Vdc	PCS.3	R8 0200 011
bobina 110 Vcc / 12 Vcc	PZ.3	coil 110 Vdc / 12 Vdc	PCS.3	R8 0200 014
bobina 180 Vcc / 12 Vcc	PZ.3	coil 180 Vdc / 12 Vdc	PCS.3	R8 0200 019
bobina 180 Vcc / 24 Vcc	PZ.3	coil 180 Vdc / 24 Vdc	PCS.3	R8 0200 021
bobina 110 Vca / 12 Vcc	PZ.3	coil 110 Vac / 12 Vdc	PCS.3	R8 0200 016
bobina 208 Vca / 12 Vcc	PZ.3	coil 208 Vac / 12 Vdc	PCS.3	R8 0200 023
bobina 220 Vca / 12 Vcc	PZ.3	coil 220 Vac / 12 Vdc	PCS.3	R8 0200 025
bobina 110 Vca / 12 Vcc (1)	PZ.1	coil 110 Vac / 12 Vdc (1)	PCS.1	R6 0200 273
bobina 220 Vca / 12 Vcc (1)	PZ.1	coil 220 Vac / 12 Vdc (1)	PCS.1	R6 0200 275

(1) con condensatore (conforme EN 55022) / with capacitor (according to EN 55022)

Bobine doppio avvolgimento separato - *double separated winding solenoid coils*

descrizione		description		codice / code
bobina 48 Vcc / 12 Vcc	PZ.3	coil 48 Vdc / 12 Vdc	PCS.3	R8 0200 004
bobina 80 Vcc / 12 Vcc	PZ.3	coil 80 Vdc / 12 Vdc	PCS.3	R8 0200 008
bobina 90 Vcc / 12 Vcc	PZ.3	coil 90 Vdc / 12 Vdc	PCS.3	R8 0200 012
bobina 110 Vcc / 12 Vcc	PZ.3	coil 110 Vdc / 12 Vdc	PCS.3	R8 0200 015
bobina 180 Vcc / 12 Vcc	PZ.3	coil 180 Vdc / 12 Vdc	PCS.3	R8 0200 020

RIC.	BOBINA 24VCC CONNETTORE	R80200037
RIC.	BOBINA 24VCC 12VCC CONNETTORE	R80200038
RIC.	BOBINA 48/12VCC A.SEP CONNETT	R80200039
RIC.	BOBINA 48VCC CONNETTORE	R80200040
RIC.	BOBINA 48VCC 12VCC CONNETTORE	R80200041
RIC.	BOBINA 48VCC 24VCC CONNETTORE	R80200042
RIC.	BOBINA 80/12VCC A.SEP CONNETT	R80200043
RIC.	BOBINA 80VCC CONNETTORE	R80200044
RIC.	BOBINA 80VCC 12VCC CONNETTORE	R80200045
RIC.	BOBINA 80VCC 24VCC CONNETTORE	R80200046
RIC.	BOBINA 90/12VCC A.SEP CONNETT	R80200047
RIC.	BOBINA 90VCC CONNETTORE	R80200048
RIC.	BOBINA 90VCC 12VCC CONNETTORE	R80200049
RIC.	BOBINA 110/12VCC A.SEP CONNETT	R80200050
RIC.	BOBINA 110VCA CONNETTORE	R80200051
RIC.	BOBINA 110VCA 12VCC CONNETTORE	R80200052
RIC.	BOBINA 110VCC CONNETTORE	R80200053
RIC.	BOBINA 110VCC 12VCC CONNETTORE	R80200054
RIC.	BOBINA 180/12VCC A.SEP CONNETT	R80200055
RIC.	BOBINA 180VCC CONNETTORE	R80200056
RIC.	BOBINA 180VCC 12VCC CONNETTORE	R80200057
RIC.	BOBINA 180VCC 24VCC CONNETTORE	R80200058
RIC.	BOBINA 208VCA CONNETTORE	R80200059
RIC.	BOBINA 208VCA 12VCC CONNETTORE	R80200060
RIC.	BOBINA 220VCA CONNETTORE	R80200061
RIC.	BOBINA 220VCA 12VCC CONNETTORE	R80200062
RIC.	BOBINA 220VCA CONNETTORE DIODO	R80200063
RIC.	BOBINA 48VCC 12VCC CONN DIODO	R80200064
RIC.	BOBINA 48VCC CONNETTORE DIODO	R80200065
RIC.	BOBINA 110VCC CONNETTORE DIODO	R80200066
RIC.	BOBINA 110VCC 12VCC CONN DIODO	R80200067
RIC.	BOBINA 110VCA CONNETTORE DIODO	R80200068
RIC.	BOBINA 110VCA 12VCC CONN DIODO	R80200069
RIC.	BOBINA 180VCC CONNETTORE DIODO	R80200070
RIC.	BOBINA 180VCC 12VCC CONN DIODO	R80200071

N.B. Bobine singole con connettore.