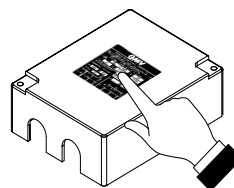
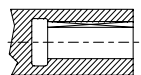


### Motore tipo / Motor type :

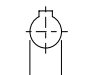
- Trifase  Three-phases
- Monofase  Single-phase
- N° Poli  N° Poles
- Elmo
- GMV
- Kw / Hp
- Tensione V.
- 50 Hz
- 60 Hz



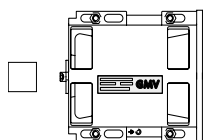
Identificare le caratteristiche del motore dalla targhetta / Identify characteristics of motor on label



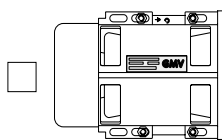
Specificare Ø foro rotore per innesto pompa.



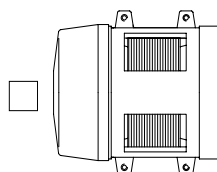
specify rotor shaft Ø for pump assembly



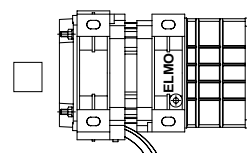
MF. KW 1,5 ÷ KW 2,6



KW 2,2 ÷ KW 14,7



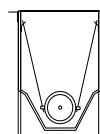
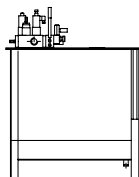
KW 18,4 ÷ KW 58,8



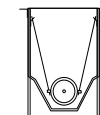
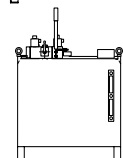
KW 2,2 ÷ KW 58,8

### Centralina tipo / Power unit Type :

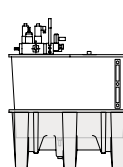
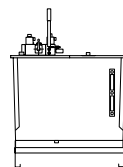
- T1
- T2
- T3
- T4



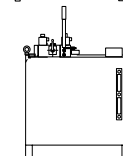
- GL



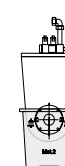
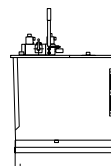
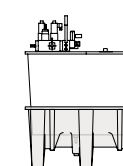
- F1/PAL



- GL motore sul fondo / GL motor on the bottom



- F1/PAL motore sul fondo / F1/PAL motor on the bottom



Cliente	Data produzione	Riferimento impianto	Note
Customer	Production date	installation reference	Notes